

DAUGHARTY FARM

300+/- ACRES | FARGO, GEORGIA

\$450,000



PROPERTY SIZE

300+/- Acres

LOCATION

Clinch County, Town of
Fargo, Georgia

CATEGORY

Hunting, Recreational, and
Riverfront

FEATURES

One mile frontage on HWY 177
and 1/2 mile frontage on the
Suwannee River



*“A walk through this tract
encounters how Georgia
looked a long, long time ago.
A naturally beautiful tract
insulated from busy life by
the Suwannee and giant
pines and cypress.”*

Hunter Brant, President,
Oakwood Realty Group

Daugharty Farm consists of all natural hardwood / pine mix forest covering the entire tract and has not been timbered in over 75 years. It is a step back in time to walk through this property with ancient cypress, loblolly pine and hardwoods throughout. A truly beautiful property bordering the Suwannee River. The property has approximately a mile of paved road frontage on HWY 177 and one half mile of frontage on the Suwannee River, which finds its headwaters at the Okefenokee National Wildlife Refuge. The Stephen C Foster Park, which operates the nearby Suwannee River Eco-Lodge, along with the Refuge are world renowned for their natural beauty and one of a kind natural ecosystem with opportunities for birding, hunting, kayaking and fishing. The Suwannee River has its own renowned reputation with its many varying landscapes from the Okefenokee to the Gulf of Mexico. This tract is ideally situated to take advantage of all these wonderful natural attractions while providing a homebase for enjoyment of the great outdoors.



HUNTER P. BRANT
904.813.4508

HUNTER@THEOAKWOODCOMPANIES.COM

OAKWOODREALTYGROUP.COM

450-106 SR 13 NORTH, SUITE 102
ST JOHNS, FL 32259



Real Estate Brokerage | Advisory & Consulting Services

DAUGHARTY FARM

300+/- ACRES | FARGO, GEORGIA

\$450,000



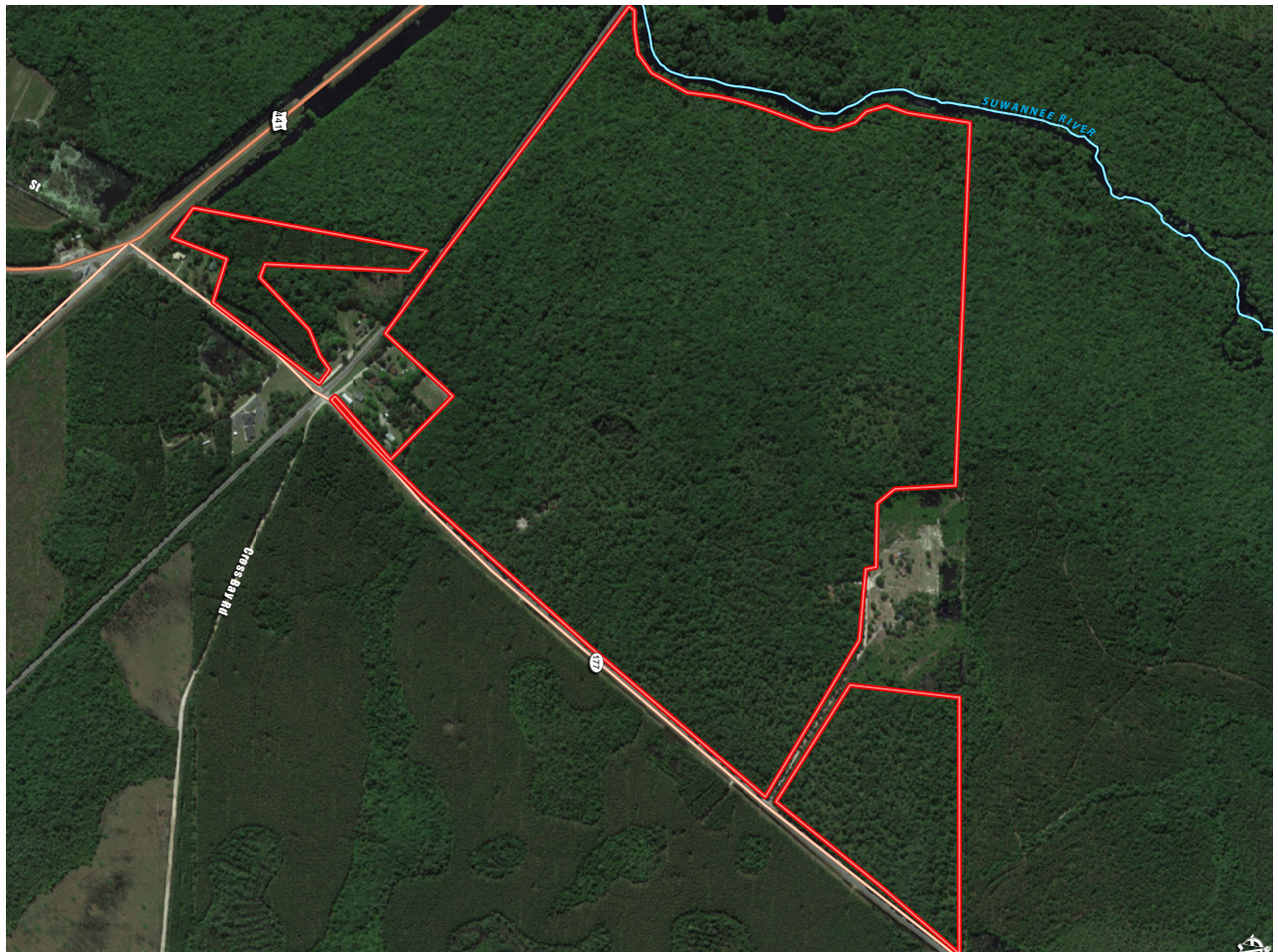
DAUGHARTY FARM

300+/- ACRES | FARGO, GEORGIA

\$450,000



VICINITY MAP



AERIAL MAP